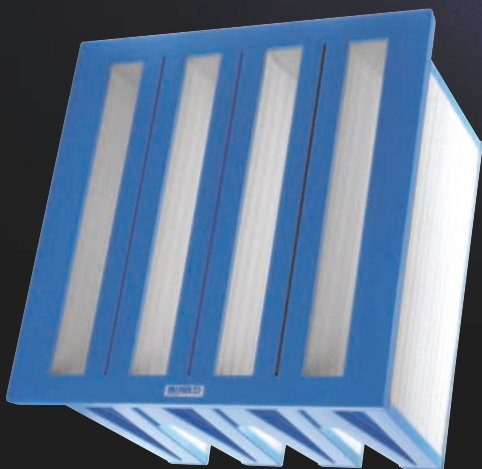


***Harness the POWER of your gas turbine  
with filtration technology for the 21st century***



DOLLINGER MODEL SONICFLOW™

***SonicFlow***™

**THE MOST ADVANCED AIR INTAKE FILTRATION  
TECHNOLOGY FOR TODAY'S HIGH EFFICIENCY  
GAS TURBINES**

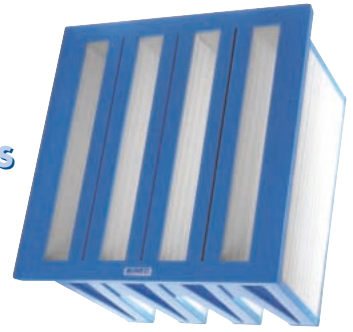
- Improves turbine efficiency and fuel savings
- High efficiency ASHRAE media
- Maximum dust-holding capacity for extended life
- Rugged, high burst pressure design

**DOLLINGER®** 

# SonicFlow™

## THE MOST ADVANCED AIR INTAKE FILTRATION TECHNOLOGY FOR TODAY'S HIGH EFFICIENCY GAS TURBINES

The unrivalled R&D team at Dollinger has been pioneering solutions for the most demanding needs in air intake filtration for over 80 years. We're proud to introduce the SonicFlow™, our latest innovation that lets you harness the power of gas turbines like never before.



DOLLINGER MODEL SONICFLOW™

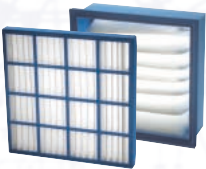
### MEDIA

- High efficiency ASHRAE tested media maximizes turbine output by removing microscopic particles which can foul stators and other vital turbine components.
- Strong reinforced glass fiber media guarantees reliable filtration, even under high velocity and turbulent operating conditions, with no media shedding.
- A highly permeable filter media that operates at low clean delta P resulting in improved turbine performance and fuel efficiency.
- The SonicFlow™ media features a graded pore structure, which maximizes dust-holding capacity and extends the time between filter changes, even under high dirt loading conditions.

### FILTER CONSTRUCTION

- The filter frame is a 100% polymeric and lightweight design that's totally corrosion resistant and disposable by incineration.
- The SonicFlow™ media is fully potted to the frame creating a strong, high burst pressure design capable of operating under the most severe flow conditions.
- The pre-mounted, seamless gasket creates a positive seal for superior leak prevention.

### PRE-FILTERS



A complete range of pre-filters is available to eliminate coarse contaminant and extend the service life of the high performance SonicFlow™ filter. Available designs include 2" & 4" filters, in both reusable and disposable designs.

### PERFORMANCE DATA & SPECIFICATIONS

Grade	Dimension (Nom.)	Clean $\Delta P$ (in.w.g.)	MERV Rating	ASHRAE Efficiency
F7	24" x 24" x 12"	0.3	13	85%
F8	24" x 24" x 12"	0.4	14	95%
F9	24" x 24" x 12"	0.4	15	95% +

**DOLLINGER®** 

For more information  
call Dollinger's Technical  
Sales Office

International:  
**+353-64-33322**  
(FAX: +353-64-33371)

Within Ireland:  
**064-33322**  
(FAX: 064-33371)

[Sales.Dollinger@airtreatment.spx.com](mailto:Sales.Dollinger@airtreatment.spx.com)

DOLLINGER INTERNATIONAL  
BALLYCASHEEN, KILLARNEY  
COUNTY KERRY, IRELAND

100% guaranteed performance.